

## IGF-I/Somatamedin C/IGF-IA, Human, Recombinant

货号：PCK016

### 产品信息

别名	Somatamedin C, IGF-IA
物种	Human
表达宿主	E.coli
序列信息	MGPETLCGAELVDALQFVCGDRGFYFNKPTGYGSSSRRAPQTGIVDECCFR SCDLRRLEMYCAPLKPAKSA with polyhistidine tag at the C-terminus.
检索号	P05019.1
分子量	8.59 kDa
标签	His-tag at the C-terminus
生物活性	Measure by its ability to induce MCF-7 cells proliferation. The ED50 for this effect is 0.9-3.1 ng/mL. The specific activity of recombinant human IGF-I is approximately $>1.2 \times 10^3$ IU/mg.

### 产品特性

纯度	$>95\%$ as determined by SDS-PAGE. Ni-NTA chromatography.
内毒素	$<0.01$ EU per 1 $\mu\text{g}$ of the protein by the LAL method.
保存	Lyophilized protein should be stored at $-5\sim-20^\circ\text{C}$ for 1 year. Upon reconstitution, store at $2-8^\circ\text{C}$ for up to 1 week. Further dilute in a buffer containing a carrier protein or stabilizer (e.g. 0.1% BSA, 10% FBS, 5% HSA or 5% trehalose solution), protein aliquots should be stored at $-5\sim-20^\circ\text{C}$ or $-80^\circ\text{C}$ for 3-6 months.
运输	Ambient temperature or ice pack.
制剂	The protein was lyophilized from a 0.2 $\mu\text{m}$ filtered solution containing 1X PBS, pH 7.4.



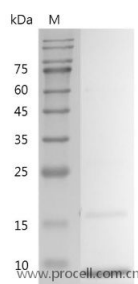
## 复融

It is recommended to reconstitute the lyophilized protein in sterile water to a concentration not less than 100  $\mu\text{g/mL}$ . Do Not Vortex! Vigorous shaking may impair the biological activity of the protein.

## 背景介绍

Insulin-like growth factor 1 (IGF-1), also called somatomedin C, is a protein that in humans is encoded by the IGF1 gene. IGF-1 is a hormone similar in molecular structure to insulin. It plays an important role in childhood growth and continues to have anabolic effects in adults. A synthetic analog of IGF-1, mecasermin, is used for the treatment of growth failure.

## SDS-PAGE



## 生物活性

